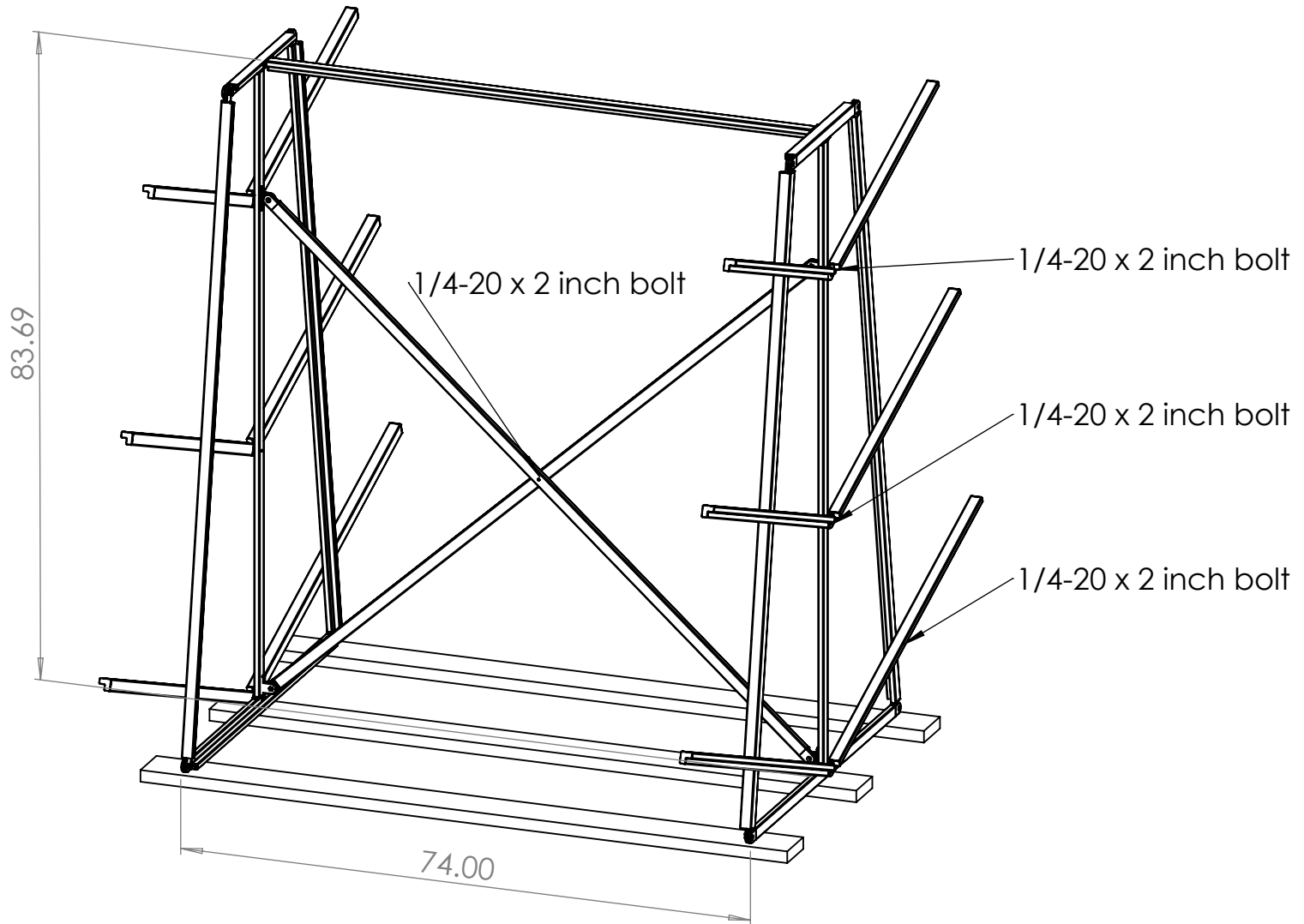
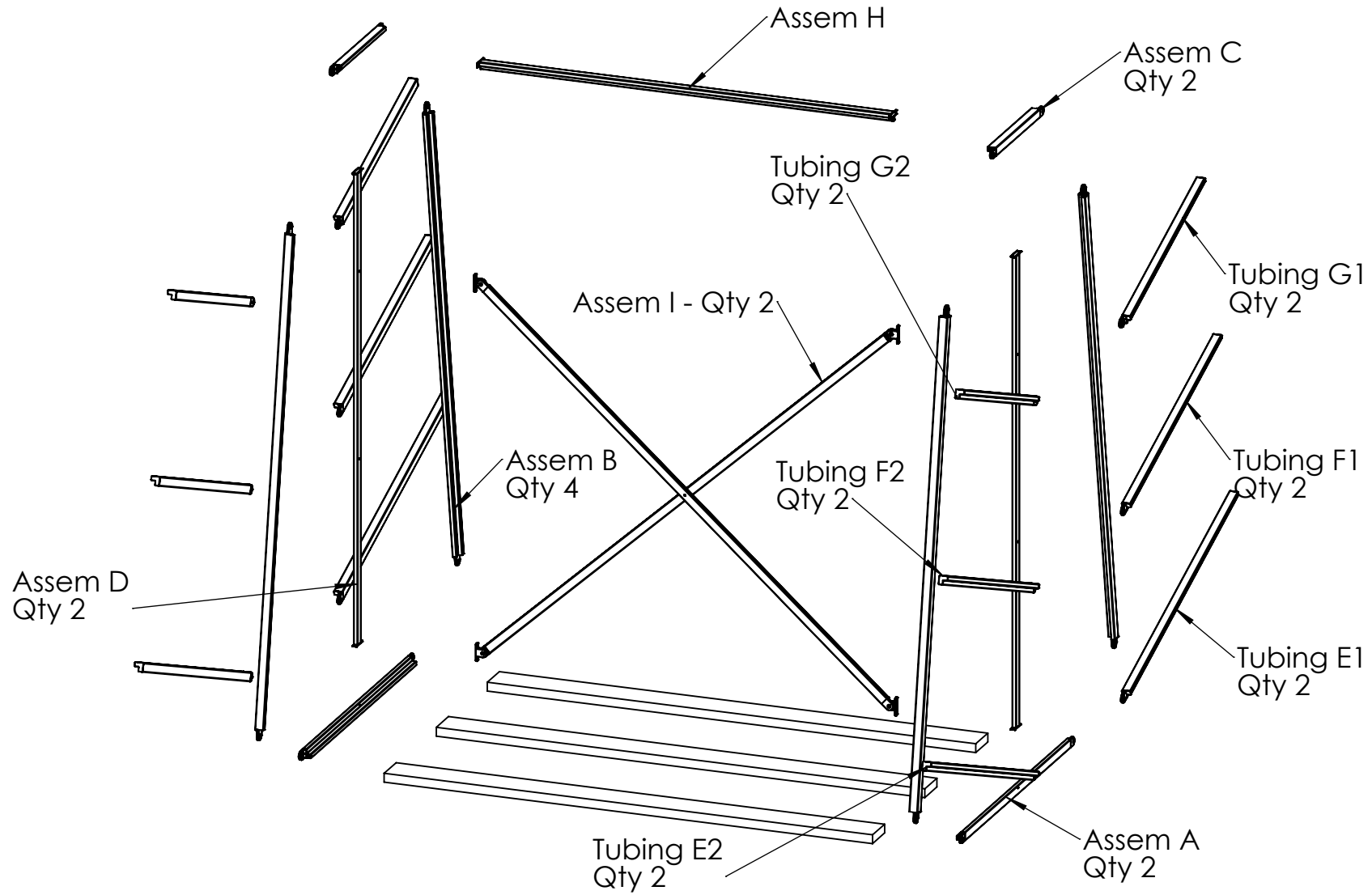


Kayak Rack



Exploded View



Date: 4-29-24

Description: Kayak Rack

Part Number:

Page: 2 Of: 10

Customer:

Drawn by:

Moxitec
ALUMINUM FRAME COMPONENTS

5

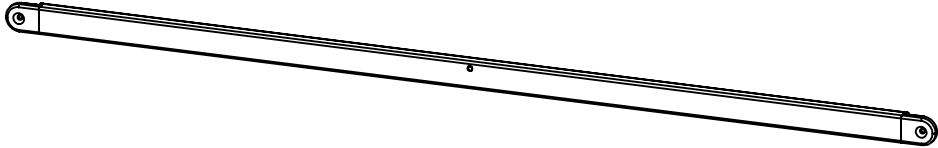
4

3

2

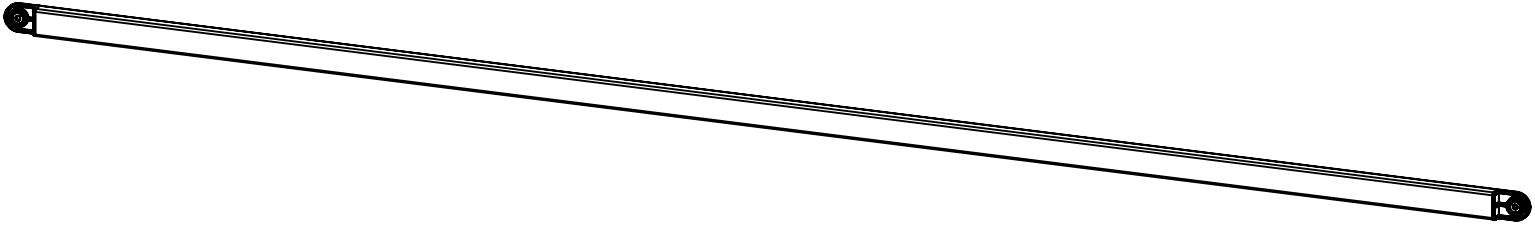
1

Assem A - Qty 2



ITEM	QTY.	Part No.	DESCRIPTION	LENGTH (IN)	WIDTH (IN)
1	1				
2	1	TLA1-BL	L-Tube (Tight Fit - Black)	48	
3	2	JPAC150	Pivot Arm Chamfered		

Assem B - Qty 2



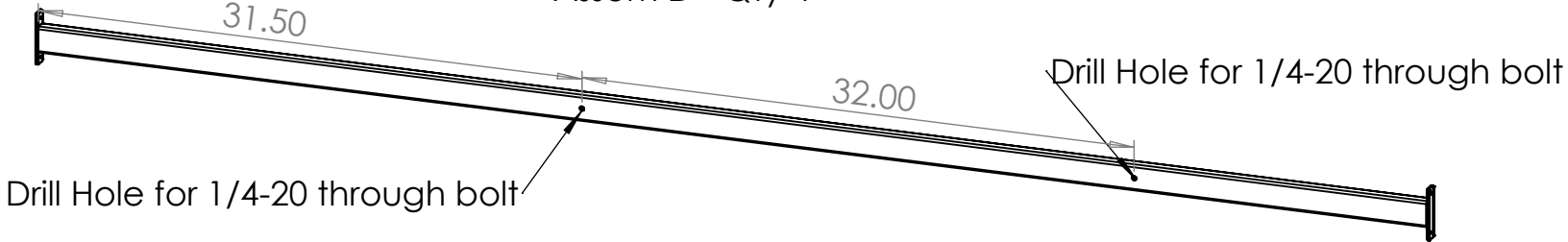
ITEM	QTY.	Part No.	DESCRIPTION	LENGTH (IN)	WIDTH (IN)
1	1				
2	1	TLA1-BL	L-Tube (Tight Fit - Black)	81.125	
3	2	JPAH150			

Assem C - Qty 2



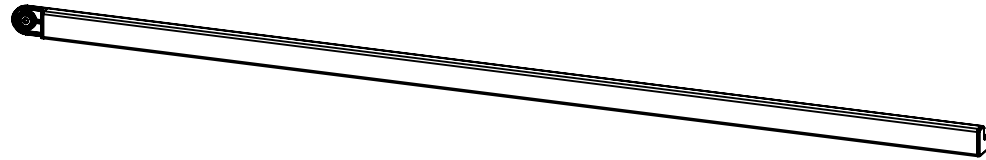
ITEM	QTY.	Part No.	DESCRIPTION	LENGTH (IN)	WIDTH (IN)
1	1				
2	1	TLA1-BL	L-Tube (Tight Fit - Black)	20	
3	2	JPAC150	Pivot Arm Chamfered		

Assem D - Qty 4



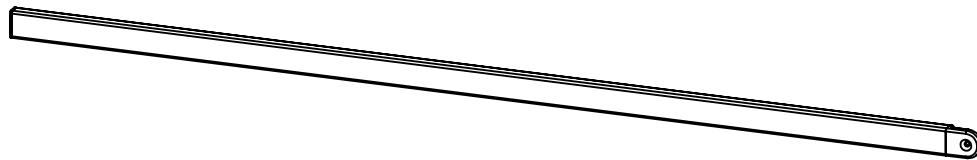
ITEM	QTY.	Part No.	DESCRIPTION	LENGTH (IN)	WIDTH (IN)
1	1				
2	1	TRA1-BL	R-Tube (Tight Fit - Black)	80.44	
3	2	JWT150	Winged T		

Assem E1 - Qty 2



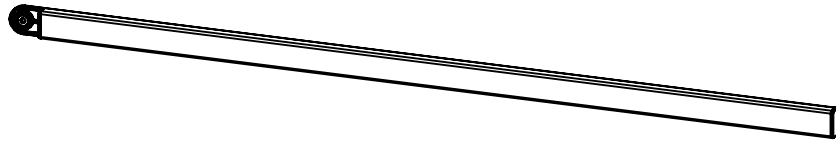
ITEM	QTY.	Part No.	DESCRIPTION	LENGTH (IN)	WIDTH (IN)
1	1				
2	1	TLA1-BL	L-Tube (Tight Fit - Black)	52	
3	1	JPAC150	Pivot Arm Chamfered		
4	1	JFC20	Filler Cap		
5	1	JLEC150	End Cap (L-Tube)		

Assem E2 - Qty 2



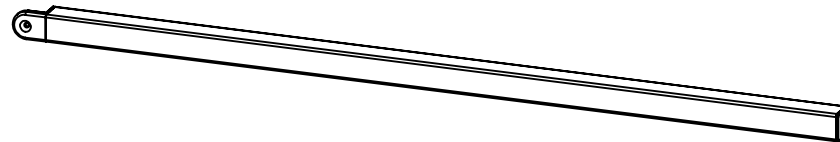
ITEM	QTY.	Part No.	DESCRIPTION	LENGTH (IN)	WIDTH (IN)
1	1				
2	1	TLA1-BL	L-Tube (Tight Fit - Black)	52	
3	1	JPAC150	Pivot Arm Chamfered		
4	1	JLEC150	End Cap (L-Tube)		
5	1	JFC20	Filler Cap		

Assem F - Qty 2



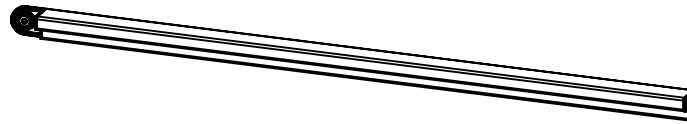
ITEM	QTY.	Part No.	DESCRIPTION	LENGTH (IN)	WIDTH (IN)
1	1				
2	1	TLA1-BL	L-Tube (Tight Fit - Black)	44	
3	1	JPAC150	Pivot Arm Chamfered		
4	1	JFC20	Filler Cap		
5	1	JLEC150	End Cap (L-Tube)		

Assem F2 - Qty 2



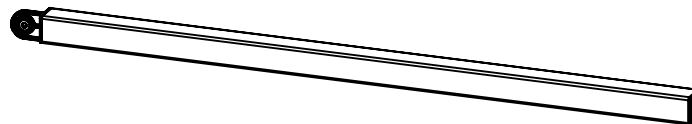
ITEM	QTY.	Part No.	DESCRIPTION	LENGTH (IN)	WIDTH (IN)
1	1				
2	1	TLA1-BL	L-Tube (Tight Fit - Black)	44	
3	1	JPAC150	Pivot Arm Chamfered		
4	1	JLEC150	End Cap (L-Tube)		
5	1	JFC20	Filler Cap		

Assem G1 - Qty 2



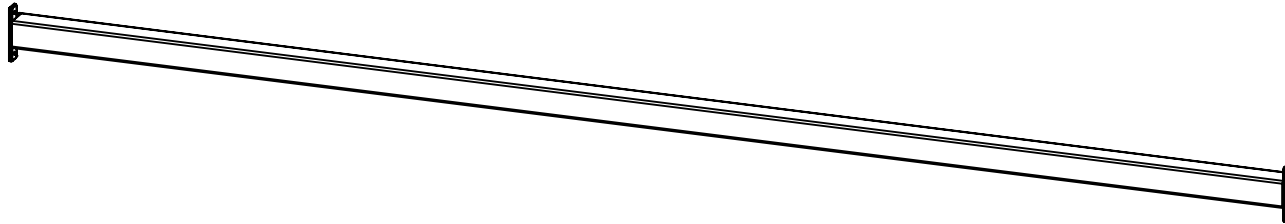
ITEM	QTY.	Part No.	DESCRIPTION	LENGTH (IN)	WIDTH (IN)
1	1				
2	1	TLA1-BL	L-Tube (Tight Fit - Black)	36	
3	1	JPAC150	Pivot Arm Chamfered		
4	1	JFC20	Filler Cap		
5	1	JLEC150	End Cap (L-Tube)		

Assem G2 - Qty 2



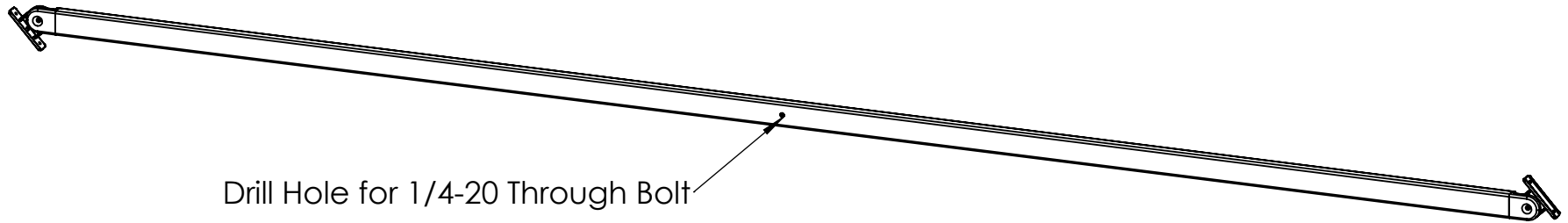
ITEM	QTY.	Part No.	DESCRIPTION	LENGTH (IN)	WIDTH (IN)
1	1				
2	1	TLA1-BL	L-Tube (Tight Fit - Black)	36	
3	1	JPAC150	Pivot Arm Chamfered		
4	1	JFC20	Filler Cap		
5	1	JLEC150	End Cap (L-Tube)		

Assem H - Qty 2



ITEM	QTY.	Part No.	DESCRIPTION	LENGTH (IN)	WIDTH (IN)
1	1				
2	1	TLA1-BL	L-Tube (Tight Fit - Black)	70.75	
3	2	JWT150	Winged T		
4	2	JFC20	Filler Cap		

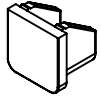
Assem I - Qty 2



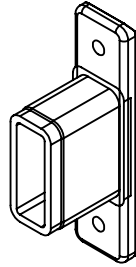
Drill Hole for 1/4-20 Through Bolt

ITEM	QTY.	Part No.	DESCRIPTION	LENGTH (IN)	WIDTH (IN)
1	1				
2	1	TRA1-BL	R-Tube (Tight Fit - Black)	92.25	
3	2	JPB150	Pivot Base		
4	2	JPAC150	Pivot Arm Chamfered		

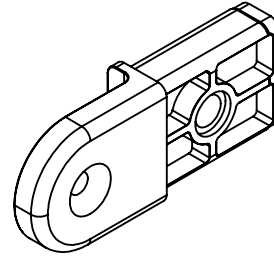
Filler Cap
JFC20



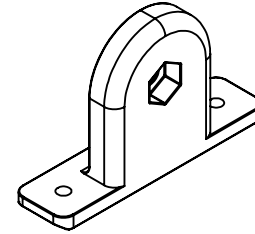
Winged T
JWT150



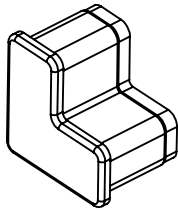
Pivot Arm (Chamfered)
JPAC150



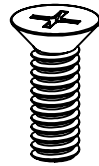
Pivot Base
JPB150



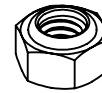
L End Cap
JLEC150



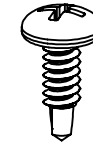
Stainless Machine Screw
PFHMS-142075



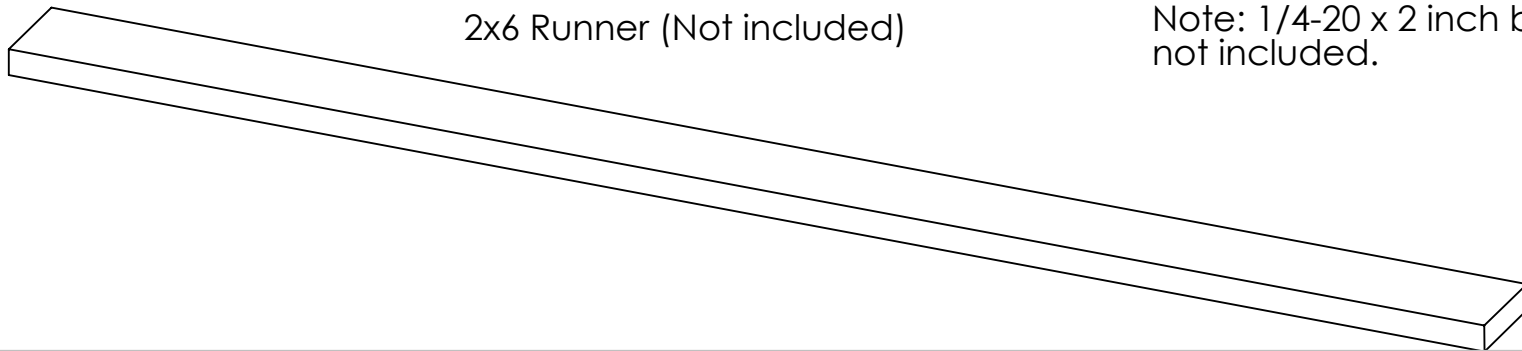
Stainless Lock Nut
SLN-1420



Stainless Pan Head Screw
PPHS10-625



2x6 Runner (Not included)



Note: 1/4-20 x 2 inch bolts not included.